



Shenley Park June 2023 Newsletter

Once a private Estate known as Porters Park, then a site of a Mental Hospital, Shenley Park is now a unique self funded Park for all. The Park is steeped in history and hosts an Orchard, Meadow, Woodland walks, Historic buildings and an amazing 2 acre landscaped Walled Garden with an Amphitheatre. The Park is open all year round and is free to use as are the car parks. Events are held throughout the year; it is a perfect base for walks and has a Tea Room that is open daily from 8am.

Remembering Tom

We recently learned that Tom Driscoll, a neighbour who was a Trustee of the Park between 2000-2006 had passed away.



Tom supported the park in every way, helping at apple days and park events and enjoyed watching the park develop into what it is today.

Over the years Tom has donated trees to the park, in memory of Tom we have tied a yellow ribbon around his trees, one of which is in the Walled Garden.

Thank you, Tom.

Black Cherry

Prunus cerasifera 'Nigra'

Walled Garden

Despite a dramatic mix of cold and hot weather with little rain the Walled Garden is bursting with life.

Many birds have nested and the fledgelings enjoy practising their flight, just missing visitors on the way.

We have this year hardy fuchsias and other perennial plants for sale. The unusual varieties of chilli are growing in the polytunnel and will be out for sale end of June/July time.

Apple Juice is also for sale, pay by cash into the honesty box or by card at weekends and bank holidays.

We are looking forward to our summer events, tickets are available now via our website www.shenleypark.co.uk

Some tickets may be available on the day, details of this will be made available the day before the event.



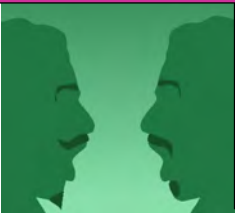
Shenley Park Walled Garden Summer Events



Jane Austens Emma
Sun 16th July
7pm



Comedy of Errors
Sat 29th July
7pm



HERTS BIG BAND JAZZ CONCERT

Sat 1st July
1-5pm

Bring a picnic or enjoy
the pizza van and bar

Alices Adventures in
Wonderland
Sun 23rd July
3pm



Sat 1st July , Hertfordshire Big Band
afternoon concert bring a picnic or get wood fired
pizza and real ale courtesy of the Orchard Tea
Room pizza van in the garden.

Tickets;

Jazz in the Walled Garden.

Tickets and more information via

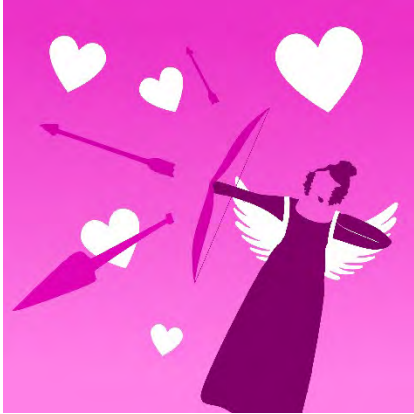
<https://www.eventbrite.co.uk/e/jazz-picnic-in-the-walled-garden-tickets-616701600087>

Theatre

We have also three productions by **The Pantaloons** this summer.

<https://thepantaloons.co.uk/shows/>

Jane Austens Emma - Sun 16th July 7pm



Join the critically-acclaimed Pantaloons Theatre Company for a riotous Regency rom-com!

Meet misguided matchmaker Emma as she tries to play Cupid in this hilarious yet faithful new adaptation of Jane Austen's satirical story.

This fast-paced, physical and funny show is filled with romance, music and The Pantaloons' own charming brand of theatrical chaos

Alices Adventures in Wonderland - Sun 23rd July, 3pm



Follow the critically-acclaimed Pantaloons down the rabbit hole for their own hilarious take on Lewis Carroll's nonsensical novel.

All the unusual suspects are here: the mirthful Mad Hatter, the perpetually late White Rabbit, the quarrelsome Queen of Hearts and, of course, the adventurous Alice herself.

A delightfully anarchic show that gets curiouser and curiouser with live music and audience interaction.

The Comedy of Errors - Sat 29th July, 7pm.



Cartoonish capers in Shakespeare's funniest farce!

Two sets of shipwrecked twins - who lost their doubles years ago - unknowingly end up in the same place at the same time. Chaos ensues; but will the searching siblings find each other in the end?

Expect silly slapstick, abundant anachronisms and memorable music nestled amongst Shakespeare's poignant poetry as the critically-acclaimed Pantaloons put their own inimitable spin on this classic comedy.

For all events bring a picnic and something to sit on. Dogs welcome on a short, fixed lead. All bookings are online, click on the event to buy tickets (some events may not yet be on sale, please check back at a later date).

Around the park

After a beautiful abundance of blossom, we now have many apples forming on the trees. We would expect a natural fruit drop as they develop but hope for a good crop this year.

Do look at toward the end of summer notice of our family apple picking days which will be posted around the orchard and on our website.

Grass cutting

We strive to leave areas of grass long throughout the park, cutting paths for walking through the orchard and meadow and cutting a strip for example at the side of paths around the pond and towards Cow Banks Wood. Where there are wild flowers we will leave these areas long until the flowers have finished.

At the green next to Andrews Close shops we cut the back area short and leave a long area at the front with a winding path cut through it. If there are areas of the park that you think should be left long or do not like left long please do get in touch shenleypark@gmail.com, we cannot give assurances that there will be immediate changes but it would be useful to hear your views.

No Mow May is a phenomenon that has grown over the years, unfortunately in many cases areas are left long only to be mown down on the 1st June. This is of no benefit to wildlife and for a full lifecycle the grass would be left until August at least.

We need these wildlife habitats now more than ever so do please bear this in mind.

Tennis courts

We are pleased to be able to say that the trustees of Shenley Park have set aside funds to restore the tennis courts. We are in the process of getting quotes for the works that need to be done.

Car Parking

Thanks to our staff our car parks have had an overhaul with new lines and clearly marked disabled bays.

We have an overflow car park opposite the main car park that is opened when the main car park becomes busy. If you are planning a walking group visit to the park, please get in touch as we have a further overflow car park shenleypark@gmail.com

How to contact us?

If you would like to ask us a question or report something please either email us shenleypark@gmail.com or call 01923 852629.

If you would like to share your photos of the park please use tags below.

Website	www.shenleypark.co.uk	Email	shenleypark@gmail.com
Facebook	@ShenleyPark		
Instagram	#shenleyparkandwalledgarden	Phone	01923 852629